

The **KALANET** project



Title : Efficacy, acceptability and cost-effectiveness of long lasting insecticidal nets in the prevention of Kala-azar

Period : 01/09/2005 to 31/08/2009

Coordinator : Prof. Dr. Marleen Boelaert, ITM

Instrument: Specific Targeted Research Project

Thematic Priority: INCO DEV 2

General objective:

- To evaluate the *efficacy*, the *acceptability* and the *cost-effectiveness* of long-lasting insecticide treated bed nets for the prevention of visceral leishmaniasis in *L. donovani* endemic areas of the Indian subcontinent.

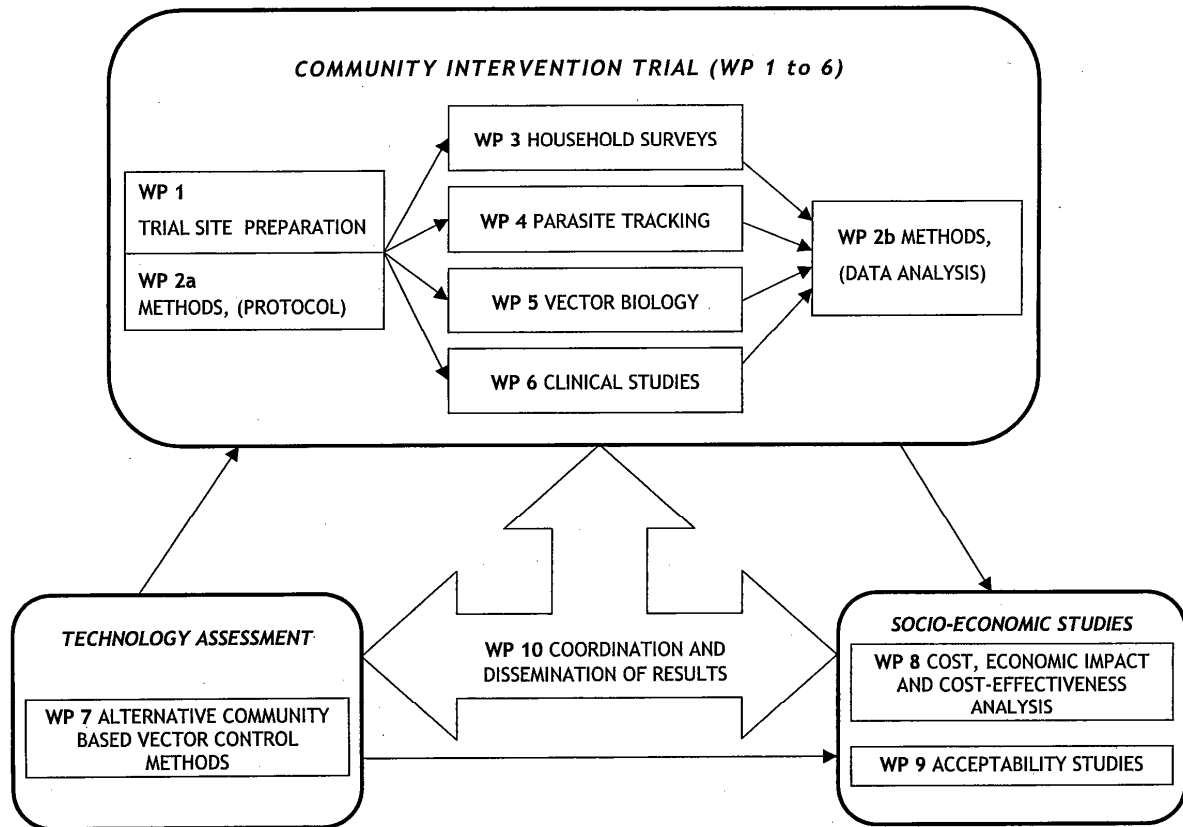
Specific objectives:

- To evaluate the efficacy of long-lasting insecticidal bed nets (LLIN) in the prevention of visceral leishmaniasis in a community intervention trial in the endemic focus of Nepal and India
- To estimate the cost and cost-effectiveness of an LLIN-based prevention strategy, and to estimate the impact of use of LLIN on economic status of households in the Indian subcontinent
- To examine the acceptability of LLIN in the Indian subcontinent
- To evaluate the efficacy of alternative vector control technologies

Partners:

- Banaras Hindu University (BHU) Varanasi, India
- B.P. Koirala Institute of Health Sciences (BPKIHS) Dharan, Nepal
- ICMR-Rajendra Memorial Research Institute of Medical Sciences (RMRIMS), Patna, India
- Institute voor Tropical Medicine (ITM), Antwerp, Belgium
- International Centre for Diarrhoeal Disease Research, Bangladesh (ICDDR-B), Dhaka, Bangladesh
- London School of Hygiene and Tropical Medicine (LSHTM), London, UK
- Université de Genève (UNIGE), Geneva, Switzerland

Project Organisation & Workpackages :



Design

- Randomized matched cluster trial
- 90% power to detect a 50% reduction in incidence rate due to LLIN if incidence in controls = 2%/year
- Total clusters = 26, i.e. 13 matched pairs in total, 8 in India, 5 in Nepal : with 2 year follow-up.

Current status

- Started in September 2005
- *Sept. 2005-October 2006 :* Preparation phase
- *Nov. 2006-January 2007 :* Baseline immunology survey (IS-1) in control & intervention villages, and distribution of LLINs in the intervention group
- *April/May and August 2007:* Quarterly Surveys (active search for clinical KA)
- *Nov. 2007-January 2008 :* Second immunology survey (IS-2)
- *April 2008:* Interim analysis
- *May, August 2008:* Quarterly Surveys
- *Nov. 2008 - January 2009:* Third immunology survey
- *September 2009* Final reporting



More information: <http://www.kalanetproject.org>

